

ALBION STONE

portland stone - naturally

Portland Mine Report No.108 – November 2022

20 Years since we opened our first Mine. Mining has enabled us to secure vast, and otherwise inaccessible, reserves of Portland Stone for many coming decades.



www.albionstone.com

Technical Manual:

Albion Stone has written the technical manual with the assistance from key experts in the stone industry. The manual seeks to provide information relating to the typical uses of Portland Stone which include cladding, internals, landscaping and ornate decorative stonework. Please look at the website: www.albionstone.com/technical-manual

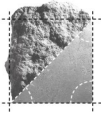
Block Orders:

To discuss any individual block requirements or to place an order, please contact Tony Booker on 07768 077439 or email tonybooker@albionstone.com. Alternatively you can call the Portland office on 01305 860369.

Samples:

Typical samples of the various Portland stones are available for immediate despatch. Please request via enquiries@albionstone.com

ALBION STONE



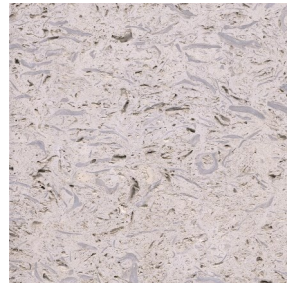
ALBION STONE

portland stone - naturally

Jordans Mine Portland

The scans on the right are indicative samples - please see the Range Panels at Portland for the full geological characteristics of the stones.

Grove Whitbed



Fancy Beach Whitbed



Jordans Whitbed



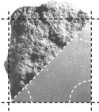
Jordans Basebed



Maximum Block Sizes	Overall Size	10.44m ³	6.98m ³	9.71m ³	7.04m ³
	Length	4.40m	4.00m	4.70m	3.50m
	Bed Height	2.90m	2.30m	2.70m	2.60m
Average Block Sizes (Recent production)	Overall Size	2.21m ³	1.29m ³	1.19m ³	0.85m ³
	Length	1.64m	1.45m	1.27m	1.18m
	Bed Height	1.22m	0.89m	1.06m	0.93m
Current Availability: <i>Shows the unallocated stock over the next 0-3 months.</i>		11,000 - 13,000m ³	3,000 - 4,000m ³	5,000 - 5,500m ³	750 - 1,000m ³
Future Availability: <i>Shows the estimated unallocated stock and planned production over the next 3-12 months.</i>		13,000 - 15,000m ³	4,000 - 5,000m ³	5,500 - 6,000m ³	2,000 - 3,000m ³

www.albionstone.com

ALBION STONE



ALBION STONE

portland stone - naturally

Bowers & Stonehills Mine Portland

The scans on the right are indicative samples - please see the Range Panels at Portland for the full geological characteristics of the stones.

Bowers Whitbed Block are still available upon request

Bowers Roach



Bowers Basebed



Stonehills Whitbed



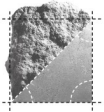
Ostrea Patch Reef Whitbed



Maximum Block Sizes	Overall Size	4.32m ³	3.59m ³	4.41m ³	8.40m ³
	Length	4.00m	2.20m	3.10m	3.40m
	Bed Height	2.00m	2.50m	2.35m	2.10m
Average Block Sizes (Recent production)	Overall Size	0.65m ³	0.83m ³	0.86m ³	2.50m ³
	Length	1.36m	1.04m	1.13m	1.74m
	Bed Height	0.46m	1.01m	1.08m	1.16m
Current Availability: <i>Shows the unallocated stock over the next 0-3 months.</i>		1,500 - 2,00m ³	100 - 250m ³	1,500—2000m ³	500 - 750m ³
Future Availability: <i>Shows the estimated unallocated stock and planned production over the next 3-12 months.</i>		2,000 - 2,500m ³	250 - 500m ³	3,000—4,000m ³	500 - 750m ³

www.albionstone.com

ALBION STONE



ALBION STONE

portland stone - naturally

Range Panels for Block Sales

The Albion Stone Range Panels are principally intended to act as a reference for the geological features in finished stones being produced within our factory. It is not easy to closely assess the finer characteristics of raw, freshly mined blocks before they have been cut with a precision stone saw in a manufacturing environment. We will make every reasonable attempt to ensure that the blocks supplied, exhibit features broadly similar to those shown in the Factory's range panels. However, we do strongly encourage customers to come to the mines and select their own blocks with the aim of ensuring that the stone being extracted at the time conforms to their individual customers' expectations.

We are happy for any block customer to use the range as an indication of the geological feature present in the stone, but we would strongly recommend that the customer clearly identifies an acceptable range from slabs at their factory that can be used as part of their quality control system and manages the client's expectations of this natural product.

It is important to remember that any geological feature demonstrated by our range panels will not be considered as a flaw unless their concentration becomes so great that the typical character of the stone is lost.

We would strongly recommend that any customers adopt the same principles with their clients and note that the wording has been copied from internationally accepted BSEN 1469 the standard for Natural Stone Products.

Block loading requirements:

For safety reasons, all lorries must have timbers (these can be purchased from us) and all loads must be strapped down. Lorries will not be loaded without them. Due to Brexit, all export deliveries now need to be on treated timbers which can also be purchased from us.

